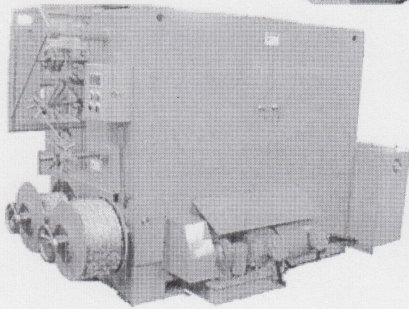
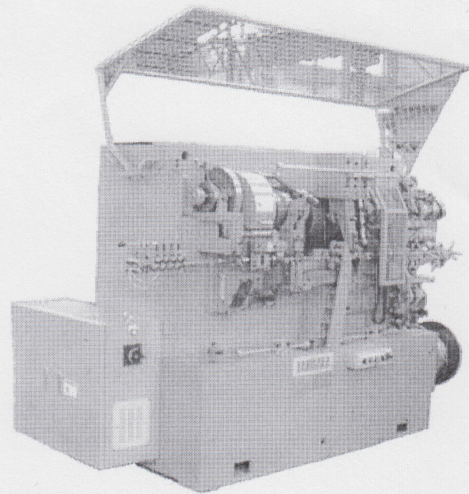
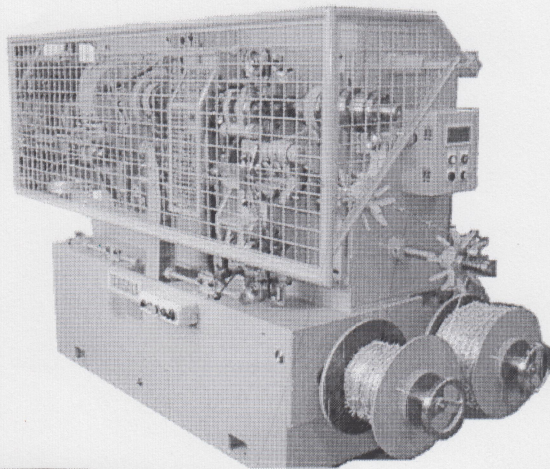
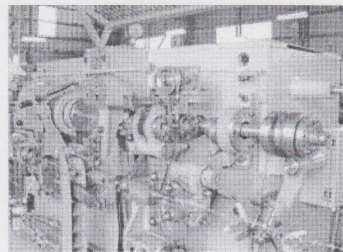


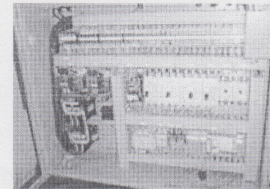
# "TANISAKA" REVERSE-TWIST TYPE BARBED WIRE MACHINE MODEL TSB-8



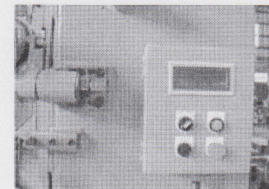
Back Side



Barb Wire Making Section



Control Panel



Operation Panel (Touch-panel)

## FEATURES

1. Winding tension is set on Touch-Panel.
2. Speed is increased up to 260rpm (max).
3. Driving speed can be changed High and Low by inverter according to barb pitch

## MAIN SPECIFICATION

|                             |  |
|-----------------------------|--|
| Cord Wire Gauge             | : 1.50 - 1.70mm (approx. T.S. 900 - 1200N/mm <sup>2</sup> )                                  |
| Barb Wire Gauge             | : 1.40 - 1.60mm (approx. T.S. 400 - 500N/mm <sup>2</sup> )                                   |
| No. of twsits between barbs | : Approx. 5 twists   |
| Type of Barb                | : 4-points   |
| Barb pitch                  | : 3, 3.5, 4, 5, 6 inch   |
| No. of barbs per min.       | : 260 rpm (at 3, 3.5, 4 inch) max.<br>180 rpm (at 5, 6 inch) max.                            |
| Coil size                   | : O.D approx. 425mm<br>I.D approx. 110mm<br>Height approx. 210mm<br>Weight approx. 25kg max. |
| Main motor                  | : AC7.5kw x 4p motor with brake, inverter drive  |
| Winding motor               | : AC3.7kw x 4p motor, inverter drive by torque control                                       |
| Machine dimension           | : 2730 x 900 x 1660 (mm)   |
| Machine weight              | : about 3,000kg  |